

# DAC8550/51/52 Evaluation Module

This user's guide describes the characteristics, operation, and the use of the DAC8550/51/52 Evaluation Module. It covers all pertinent areas involved to properly use this EVM board along with the devices that it supports. The physical PCB layout, schematic diagram, and circuit descriptions are included.

## Contents

|   |                                  |    |
|---|----------------------------------|----|
| 1 | EVM Overview .....               | 1  |
| 2 | PCB Design and Performance ..... | 4  |
| 3 | EVM Operation .....              | 10 |

## List of Figures

|    |   |    |
|----|---|----|
| 1  | EVM Block Diagram .....                           | 4  |
| 2  | Top Silkscreen .....                              | 5  |
| 3  | Layer 1 (Top Signal Plane) .....                  | 5  |
| 4  | Layer 2 (Ground Plane) .....                      | 6  |
| 5  | Layer 3 (Power Plane) .....                       | 6  |
| 6  | Layer 4 (Bottom Signal Plane) .....               | 7  |
| 7  | Bottom Silkscreen .....                           | 7  |
| 8  | Drill Drawing .....                               | 8  |
| 9  | INL and DNL Characteristic Plot .....             | 9  |
| 10 | DAC8550/51 EVM Default Jumper Configuration ..... | 11 |
| 11 | DAC8552 EVM Default Jumper Configuration .....    | 12 |

## List of Tables

|   |  |    |
|---|--|----|
| 1 | List of DAC Devices Supported by This EVM .....    | 2  |
| 2 | Parts List .....                                   | 9  |
| 3 | Factory Default Jumper Setting .....               | 11 |
| 4 | DAC Output Channel Mapping .....                   | 12 |
| 5 | Unity Gain Output Jumper Settings .....            | 13 |
| 6 | Gain of Two Output Jumper Settings .....           | 13 |
| 7 | Capacitive Load Drive Output Jumper Settings ..... | 14 |
| 8 | Jumper Setting Function .....                      | 15 |

## 1 EVM Overview

This section gives a general overview of the DAC8550/51/52 evaluation module (EVM) and describes some factors that must be considered in using this module.

SPI is a trademark of Motorola, Inc..  
LabVIEW is a trademark of National Instruments Corporation.

## 1.1 Features

This EVM features the DAC8550/51/52 digital-to-analog converter (DAC). The DAC8550/51/52EVM is a simple evaluation module designed for quickly and easily evaluating the functionality and performance of the high-resolution, single- or dual-channel, and serial input DAC. This EVM features a serial interface to communicate with any host microprocessor or TI DSP-based system.

Although this EVM was specifically designed for the DAC8550/51 (single-channel) and DAC8552 (dual-channel) devices, it can also accommodate the DAC7512, DAC7513, DAC8501, DAC8531, and DAC8532 as they are all pin-compatible devices for the MSOP-8 (DGK) package. The DAC devices that can be installed onto the EVM board are shown in Table 1. The DAC8550/51EVM or DAC8552EVM are the only EVMs that are shipped from the factory. The remaining DAC devices listed in Table 1 have to be installed by the user as an option, if evaluating these devices is desired.

**Table 1. List of DAC Devices Supported by This EVM**

| EVM Version | Device Option      | Channel  | Installation   |
|-------------|--------------------|----------|----------------|
| 12 Bit      | DAC7512E           | 1        | Optional       |
|             | DAC7513E           | 1        | Optional       |
| 16 Bit      | DAC8501E           | 1        | Optional       |
|             | DAC8531E           | 1        | Optional       |
|             | DAC8532IDGK        | 2        | Optional       |
|             | <b>DAC8550IDGK</b> | <b>1</b> | <b>Default</b> |
|             | <b>DAC8551IDGK</b> | <b>1</b> | <b>Default</b> |
|             | <b>DAC8552IDGK</b> | <b>2</b> | <b>Default</b> |

Although the DAC was designed for single-supply operation, a bipolar output range is also possible by properly configuring the output operational amplifier circuit. This is discussed in detail in Section 3.2.3. In addition, the external operational amplifier is also installed as an option to provide output signal conditioning or boost capacitive load drive and for other output mode requirement desired.

A +5-V precision voltage reference is provided as a default circuit reference for the DAC, but as an option, a connection terminal is also available for external voltage reference, if desired.

Also an option, a 4.096-V precision reference can be added if a REF3240 is installed via U4. Because the REF3240 does not come installed from the factory, the user must install it, if desired.

## 1.2 Power Requirements

The following sections describe the power requirements of this EVM.

### 1.2.1 Supply Voltage

The DC power supply ( $V_{DD}$ ) requirement for this DAC8550/51/52EVM is selectable between +3.3 V and +5 V via W1 jumper header. The +3.3 V comes from J6-8 or J5-1 (if installed), and the +5 V comes from J6-3 or J5-3 (if installed) terminals, when plugged in via 5-6K Interface Board or the HPA449. These power supply voltages are referenced to ground through the J6-6 terminal. The  $V_{CC}$  and  $V_{SS}$  are only used by the U2 operational amplifier, which ranges from +15 V to -15 V maximum and connects through J1-3 and J1-1, respectively (if installed), or through J6-1 and J6-2 terminals. All the analog power supplies are referenced to analog ground through J1-2 and J6-6 terminals.

#### CAUTION

To avoid potential damage to the EVM board, ensure that the correct cables are connected to their respective terminals as labeled on the EVM board.

**Stresses above the maximum listed voltage ratings may cause permanent damage to the device.**

The negative rail of the output operational amplifier, U2, can be selected between VSS and AGND via W5 jumper. The external operational amplifier is installed as an option to provide output signal conditioning or for other output mode requirements desired.

### 1.2.2 Reference Voltage

The +5-V precision voltage reference is provided as the main source to supply the external voltage reference for the DAC through REF02, U3, via jumper W4 by shorting pins 1 and 2. The reference voltage goes through an adjustable 100-k $\Omega$  potentiometer, R11, in series with 20-k $\Omega$  R10, to allow the user to adjust the reference voltage to its desired settings. The voltage reference then is buffered through U8A as seen by the device under test. The test points TP1, TP2, and TP5 are also provided, as well as J4-18 and J4-20, to allow the user to connect another external reference source if the onboard reference circuit is not desired. The external voltage reference should not exceed +5 Vdc.

The REF02 precision reference is powered by  $V_{CC}$  (+15 V) through J1-3 or J6-1 terminal.

An optional +4.096-V precision voltage reference also is provided to supply the external voltage reference and set the voltage output range of the DAC under test through REF3240, U4, via jumper resistor, R15. When using U4 as a reference source, ensure that pin J4-20 is not energized; otherwise, damage to the EVM and the host board may occur.

The test point TP1 and J4-20 are provided to allow the user to connect to another external reference source if the onboard reference circuit is not desired. The external voltage reference should not exceed the applied power supply,  $V_{DD}$ , of the DAC under test.

The REF3240 precision reference is powered by +5 VA through J6-3 or J5-3 terminal (if installed).

#### CAUTION

When applying an external voltage reference through TP1 or J4-20, ensure that it does not exceed +5 V maximum. Otherwise, this can permanently damage the DAC8550/51/52, U1, device under test.

### 1.3 EVM Basic Functions

This EVM is designed primarily as a functional evaluation platform to test certain functional characteristics of the DAC8550/51/52 DAC. Functional evaluation of the installed DAC device can be accomplished with the use of any microprocessor, TI DSP, or some sort of a signal/waveform generator.

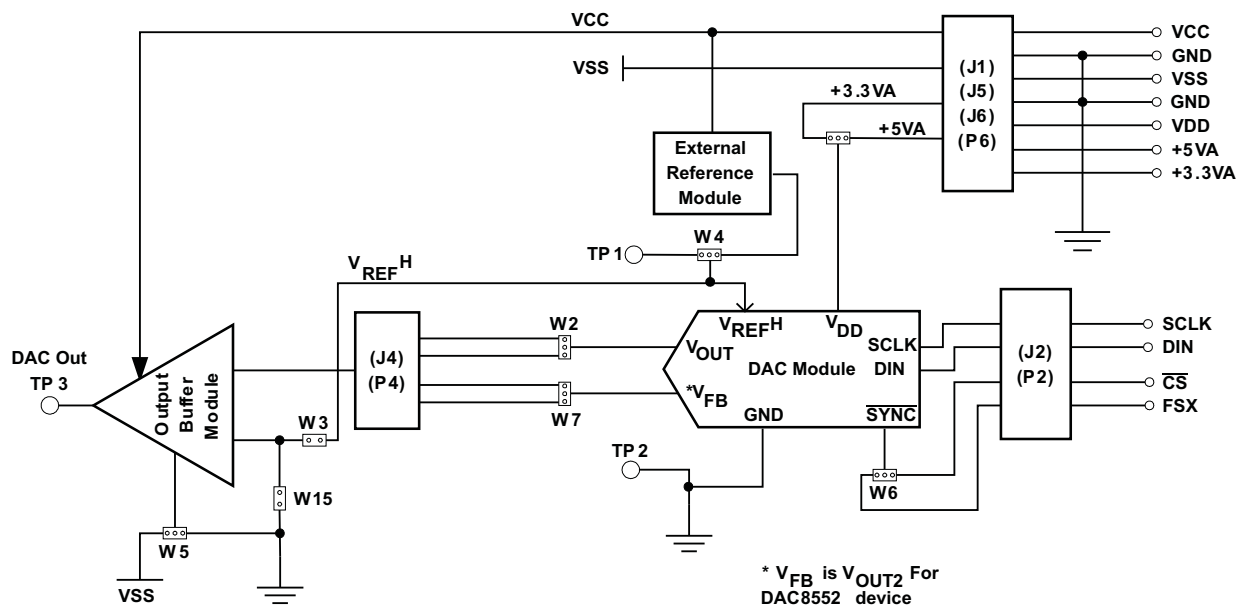
The headers J2 (top side) and P2 (bottom side) are pass-through connectors provided to allow the control signals and data required to interface a host processor or waveform generator to the DAC8550/51/52EVM using a custom-built cable.

A TI adapter interface board, the 5-6K Interface Board, is also available to fit and mate with TI's C5000 and C6000 DSP Starter Kits (DSK). This eliminates problems involved in building a custom cable. In addition, this EVM can connect to and interface with an MSP430-based platform (HPA449) that uses the MSP430F449 microprocessor. For more details or information regarding the 5-6K Interface Board or the HPA449 platform, call Texas Instruments or send an e-mail to [dataconvapps@list.ti.com](mailto:dataconvapps@list.ti.com).

The DAC outputs can be monitored through the selected pins of the J4 header connector. The output(s) can be switched through their respective jumpers W2 and W7 for the purpose of stacking. Stacking allows a total of two (for DAC8550/51) or four (for DAC8552) DAC channels to be used, providing that the frame synchronization signal,  $\overline{SYNC}$ , is unique for each EVM board stacked.

In addition, the option of selecting one DAC output that can be fed to the non-inverting side of the output operational amplifier, U2, is also possible by using a jumper across the selected pins of J4. The output operational amplifier, U2, must first be configured correctly for the desired waveform characteristic (see Section 3 of this user's guide).

Figure 1 shows a block diagram of the DAC8550/51/52EVM.


**Figure 1. EVM Block Diagram**

## 2 PCB Design and Performance

This section discusses the layout design of the PCB, describing the physical and mechanical characteristics of the EVM, as well as a brief description of the EVM test performance procedure performed. The list of components used on this evaluation module is included in this section.

### 2.1 PCB Layout

The DAC8550/51/52EVM is designed to preserve the performance quality of the DAC, the device under test (DUT), as specified in the data sheet. To take full advantage of the EVM's capabilities, use care during the schematic design phase to properly select the right components and to build the circuit correctly. The circuit should include adequate bypassing, identifying and managing the analog and digital signals, and understanding the components' electrical and mechanical attributes.

The main design concern during the layout process is the optimal placement of components and the proper routing of signals. Place the bypass capacitors as close as possible to the pins; properly separate the analog and digital signals from each other. In the layout process, carefully consider the power and ground plane because of their importance. A solid plane is ideally preferred, but because of its greater cost, sometimes a split plane can be used satisfactorily. When considering a split plane design, analyze the component placement and carefully split the board into its analog and digital sections starting from the DUT. The ground plane plays an important role in controlling the noise and other effects that otherwise contributes to the error of the DAC output. To ensure that the return currents are handled properly, route the appropriate signals only in their respective sections, meaning that the analog traces should only lay directly above or below the analog section and the digital traces in the digital section. Minimize the length of the traces but use the biggest possible trace width allowable in the design. These design practices are illustrated in [Figure 2](#) through [Figure 8](#).

The DAC8550/51/52EVM board is constructed on a four-layer printed-circuit board (PCB) using a copper-clad FR-4 laminate material. The PCB has a dimension of 43,1800 mm (1.7000 inch) × 82,5500 mm (3.2500 inch), and the board thickness is 1,5748 mm (0.062 inch). [Figure 2](#) through [Figure 6](#) show the individual artwork layers.

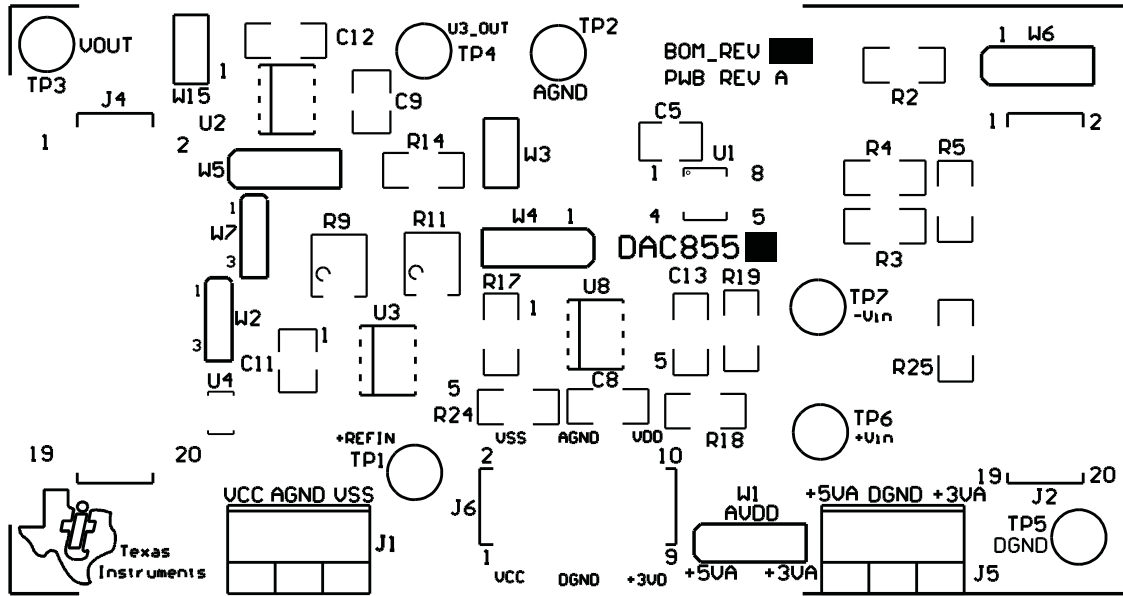


Figure 2. Top Silkscreen

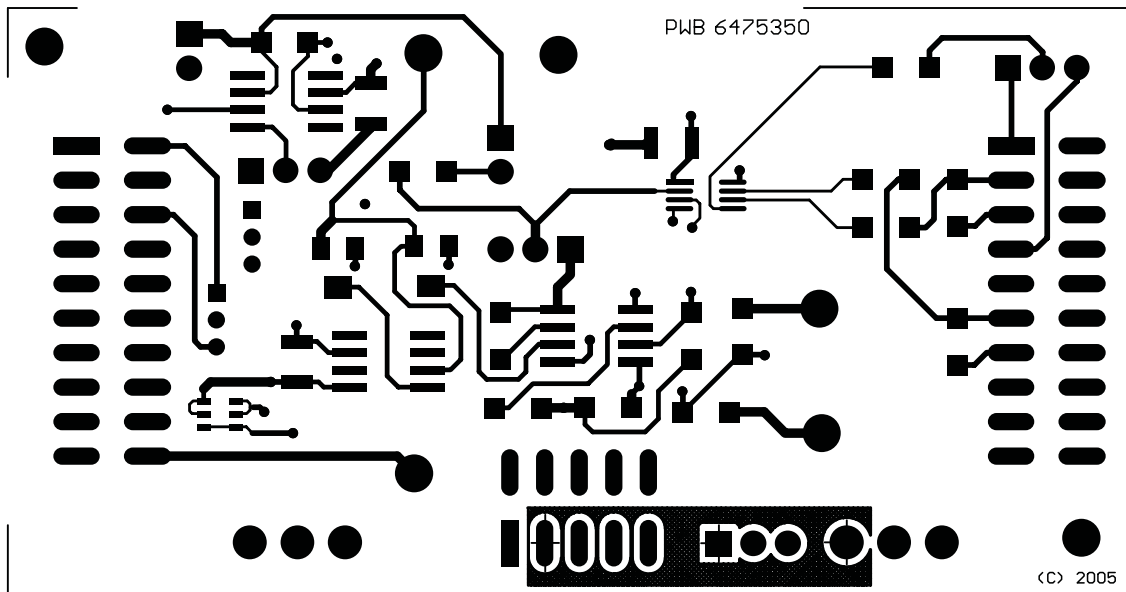


Figure 3. Layer 1 (Top Signal Plane)

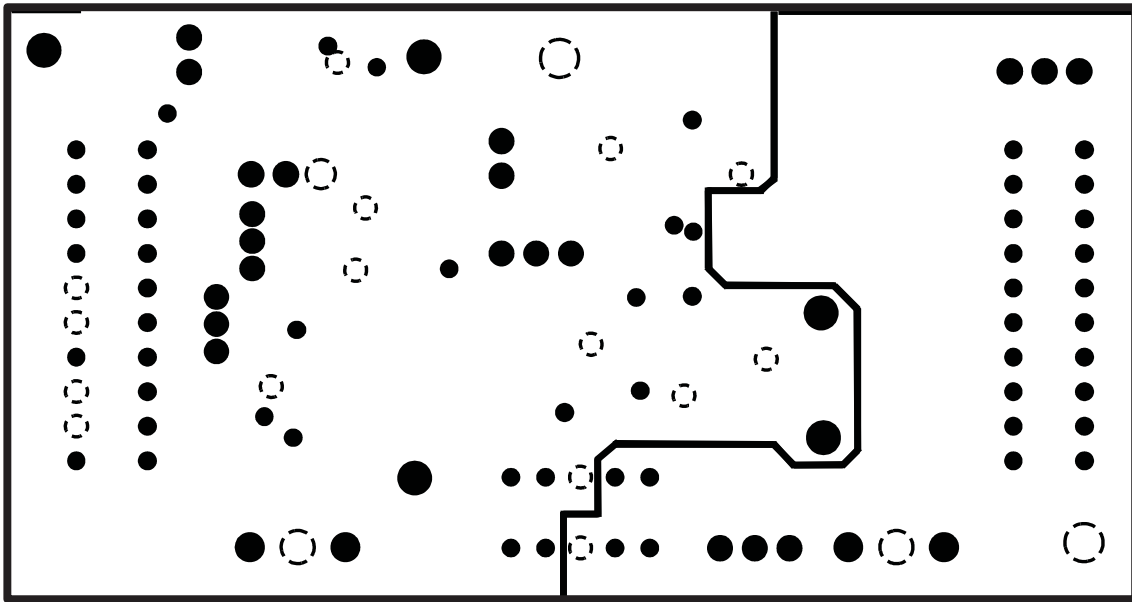


Figure 4. Layer 2 (Ground Plane)

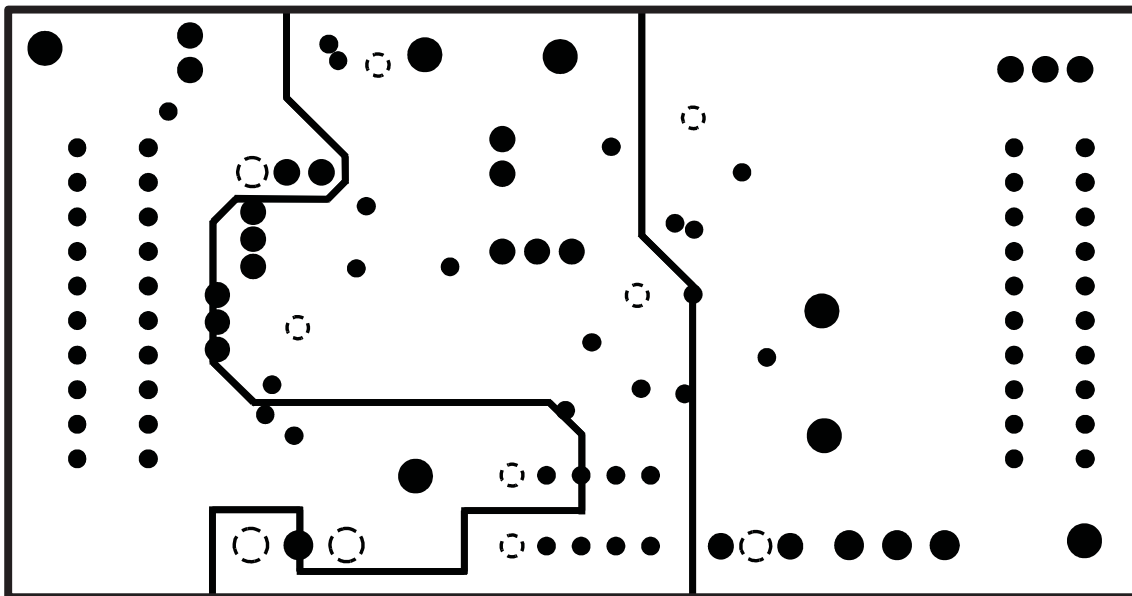


Figure 5. Layer 3 (Power Plane)

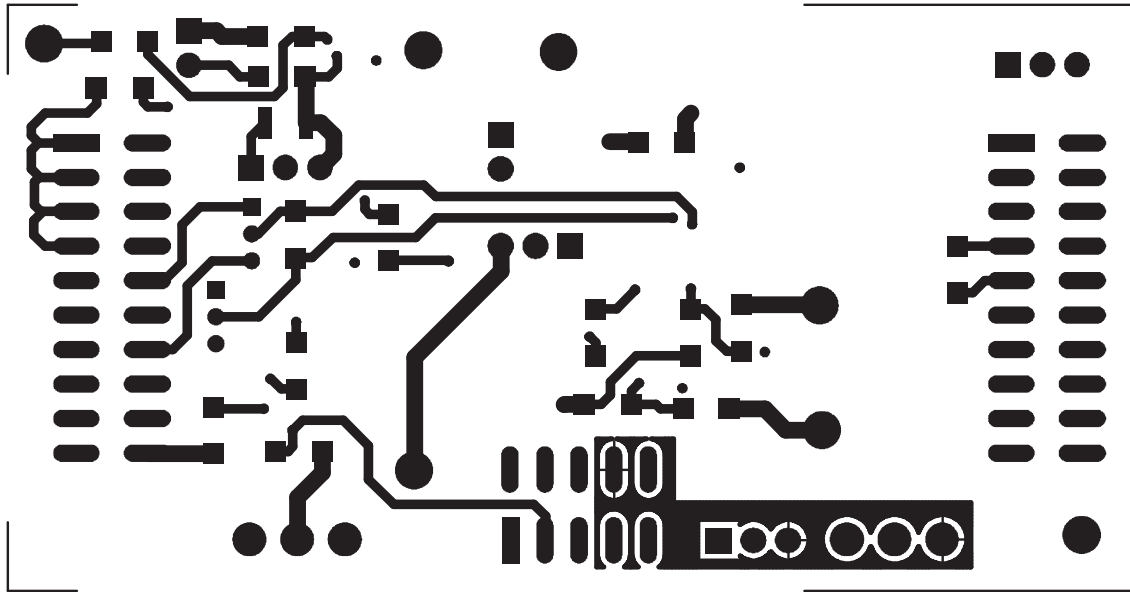


Figure 6. Layer 4 (Bottom Signal Plane)

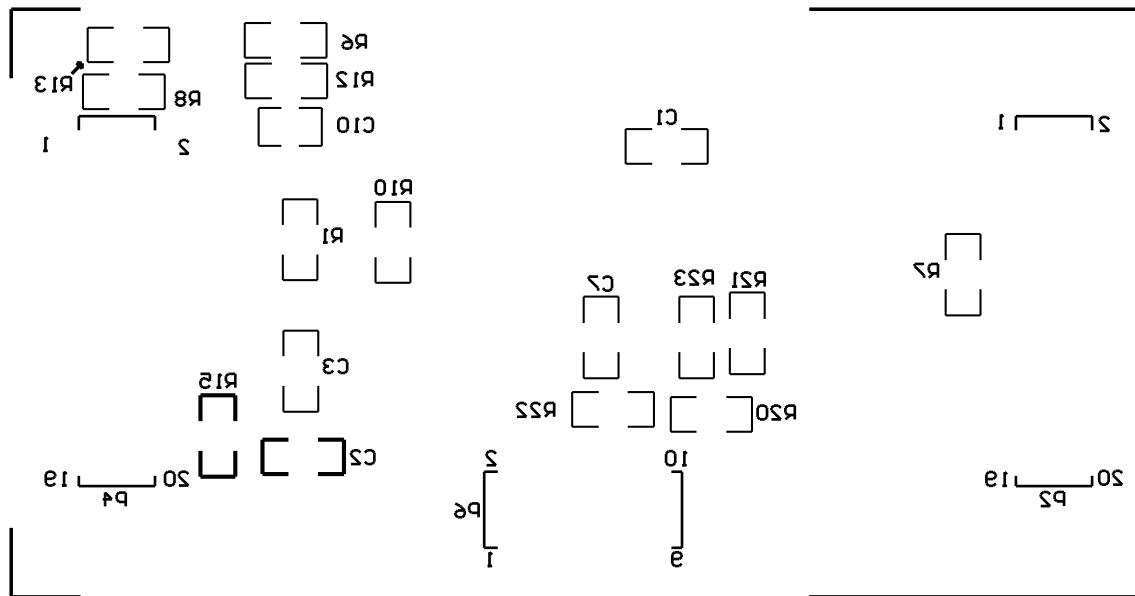


Figure 7. Bottom Silkscreen

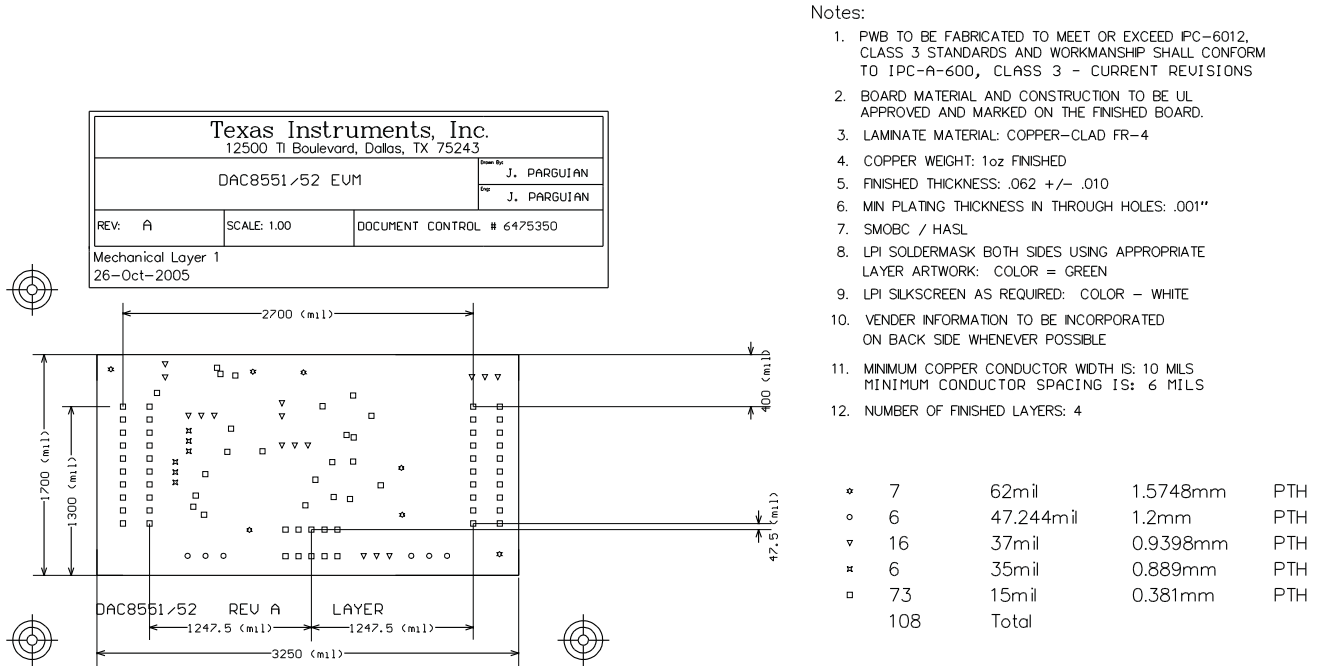


Figure 8. Drill Drawing

## 2.2 EVM Performance

The EVM performance test is performed using a high-density DAC bench test board, an Agilent 3458A digital multimeter, and a PC running the LabVIEW™ software. The EVM board is tested for all codes of 65535, and the DUT is allowed to settle for 1 ms before the meter is read. This process is repeated for all codes to generate the measurements for INL and DNL.

Figure 9 shows the INL and DNL characteristic plots.



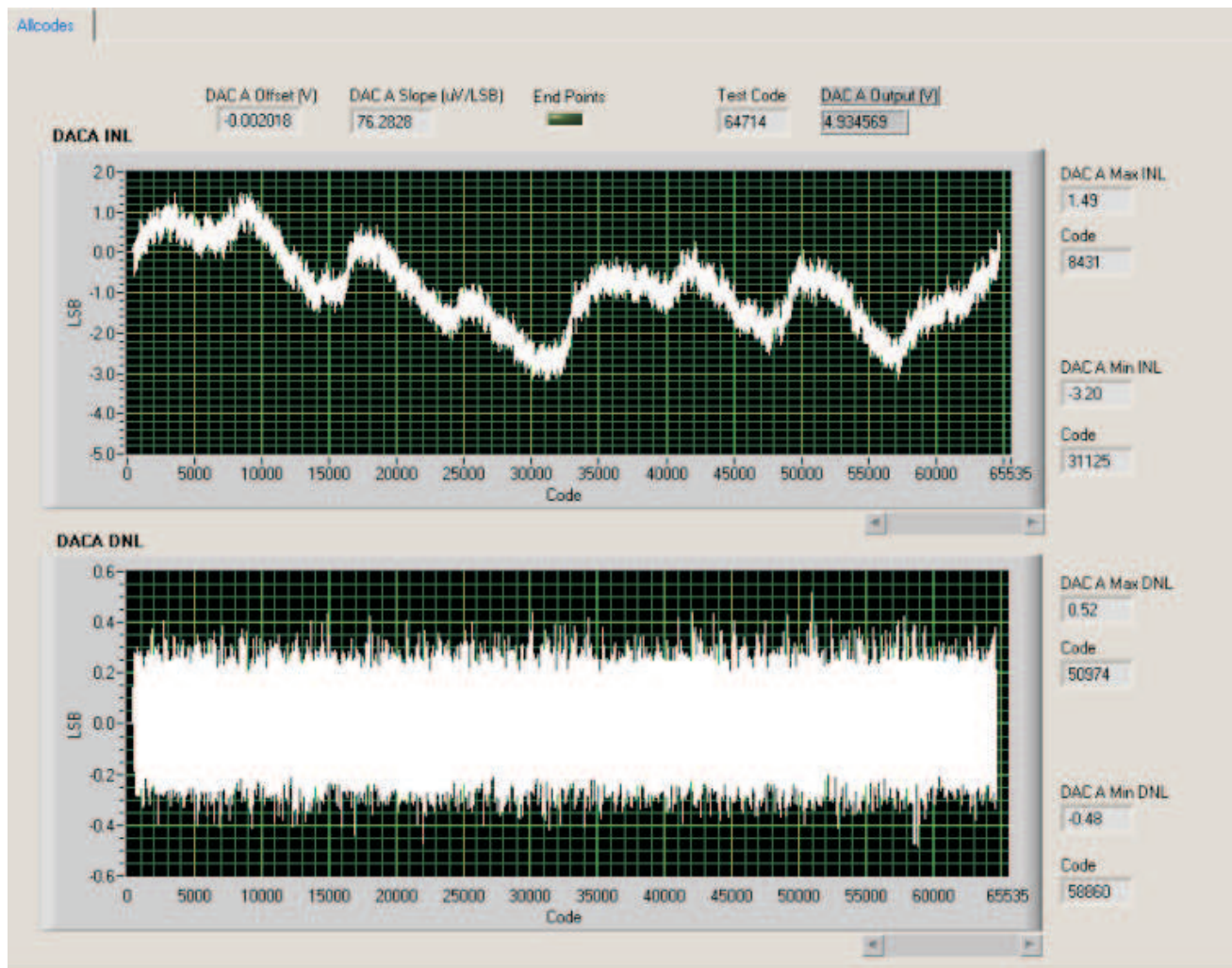


Figure 9. INL and DNL Characteristic Plot

## 2.3 Bill of Materials

Table 2. Parts List

| Item | Qty | Value         | Designators | Description  | Vendor    | Vendor Part Number |
|------|-----|---------------|-------------|--|-----------|--------------------|
| 1    | 3   | 0.1 $\mu$ F   | C1 C3 C7    | Multilayer Ceramic Chip Capacitor, 1206 SMD, 25V, $\pm$ 15% TC, $\pm$ 10% Tol                | TDK       | C3216X7R1E104KT    |
| 2    | 2   | 1 $\mu$ F     | C9 C10      | Multilayer Ceramic Chip Capacitor, 1210 SMD, 25V, $\pm$ 15% TC, $\pm$ 10% Tol                | TDK       | C3225X7R1E105KT    |
| 3    | 1   | 1 nF          | C12         | Multilayer Ceramic Chip Capacitor, 1206 SMD, 25V, $\pm$ 15% TC, $\pm$ 10% Tol                | TDK       | C3216X7R1H102KT    |
| 4    | 1   | 0.47 $\mu$ F  | C2          | Multilayer Ceramic Chip Capacitor, 1206 SMD, 50V, $\pm$ 15% TC, $\pm$ 10% Tol <sup>(1)</sup> | TDK       | C3216X7R1H474KT    |
| 5    | 2   | 10 $\mu$ F    | C5 C11      | Multilayer Ceramic Chip Capacitor, 1210 SMD, 25V, $\pm$ 15% TC, $\pm$ 10% Tol                | TDK       | C3225X7R1E106KT    |
| 6    | 3   | 10 k $\Omega$ | R6 R12 R14  | 1/8W 1206 Thick Film Chip Resistor, $\pm$ 1% Tol   | Panasonic | ERJ-8ENF1002V      |

<sup>(1)</sup> P2, P4, and P6 parts are not shown in the schematic diagram. All the P-designated parts are installed in the bottom side of the PCB opposite the J-designated counterpart. For example, J2 is installed on the top side whereas P2 is installed on the bottom side opposite of J2. **The following components are not installed: J1, J5, C2, C8, C13, R5, R7, R15, R18, R19, R20, R21, R22, R23, R24, R25, and U4. The installed U1 device determines the type of EVM.**

**Table 2. Parts List (continued)**

| Item | Qty | Value                           | Designators                              | Description   | Vendor            | Vendor Part Number      |
|------|-----|---------------------------------|--|---|-------------------|-------------------------|
| 7    | 1   | 20 k $\Omega$ Trim Pot          | R9                                       | 5T Potentiometer, 4mm SMD, Cermet   | Bourns            | 3214W-1-203E            |
| 8    | 10  | 0 $\Omega$                      | R1 R2 R3 R4<br>R5 R7 R8 R15<br>R17 R25   | 1/4W 1206 Thick Film Chip Resistor, $\pm 5\%$ Tol <sup>(1)</sup>          | Panasonic         | ERJ-8GEY0R00V           |
| 9    | 1   | 100 $\Omega$                    | R13                                      | 1/4W 1206 Thick Film Chip Resistor, $\pm 5\%$ Tol                         | Panasonic         | ERJ-8GEYJ101V           |
| 10   | 1   | 20 k $\Omega$                   | R10                                      | 1/4W 1206 Thick Film Chip Resistor, $\pm 5\%$ Tol                         | Panasonic         | ERJ-8GEYJ203V           |
| 11   | 1   | 100 k $\Omega$ Trim Pot         | R11                                      | Potentiometer, 4mm SMD, Cermet  | Bourns            | 3214W-1-104E            |
| 12   | 2   | 10 $\times$ 2 $\times$ 0.1 SMT  | J2 J4                                    | 20-PIN Terminal Strip   | Samtec            | TSM-110-01-S-DV-M       |
| 13   | 1   | 5 $\times$ 2 $\times$ 0.1 SMT   | J6                                       | 10-PIN Terminal Strip   | Samtec            | TSM-105-01-T-DV         |
| 14   | 2   | 3 $\times$ 1 $\times$ 0.138 TH  | J1 J5                                    | 3-Pin Terminal Block <sup>(1)</sup>                                       | On-Shore Tech     | ED555/3DS               |
| 15   | 2   | 10 $\times$ 2 $\times$ 0.1 SMT  | P2 P4                                    | 20-PIN Socket Strip <sup>(1)</sup>  | Samtec            | SSW-110-22-S-D-VS-P     |
| 16   | 1   | 5 $\times$ 2 $\times$ 0.1 SMT   | P6                                       | 10-PIN Socket Strip <sup>(1)</sup>  | Samtec            | SSW-105-22-F-D-VS-K     |
| 17   | 7   | 1 $\times$ 1 $\times$ 0.061D TH | TP1 TP2 TP3<br>TP4 TP5 TP6<br>TP7        | Turret Terminal Pin   | Mill-Max          | 2348-2-00-01-00-00-07-0 |
| 18   | 1   | Bipolar Op-Amp                  | U8                                       | 8-SOP(D) High Precision Low Noise Op-Amp                                  | Texas Instruments | OPA2227UA               |
| 19   | 1   | 16-Bit String DAC               | U1                                       | MSOP-8(DGK), 1-CH, SPI, Low Glitch, Voltage Output DAC <sup>(1)</sup>     | Texas Instruments | DAC8550IDGK             |
|      |     |                                 |  | MSOP-8(DGK), 1-CH, SPI, Low Glitch, Voltage Output DAC <sup>(1)</sup>     |                   | DAC8551IDGK             |
|      |     |                                 |  | MSOP-8(DGK), 2-CH, SPI, Low Glitch, Voltage Output DAC <sup>(1)</sup>     |                   | DAC8552IDGK             |
| 20   | 1   | 4.096 V Reference               | U4                                       | 4ppm/ $^{\circ}$ C, 100 $\mu$ A, SOT23-6 VOLTAGE REFERENCE <sup>(1)</sup> | Texas Instruments | REF3240AIDBV            |
| 21   | 1   | 5 V Reference                   | U3                                       | 15ppm/ $^{\circ}$ C, $\pm 0.2\%$ Tol Output, SOIC-8, Voltage Reference    | Texas Instruments | REF02AU                 |
| 22   | 1   | Bipolar Op-Amp                  | U2                                       | 8-SOP(D) High Precision, Low Offset and Drift, Op-Amp                     | Texas Instruments | OPA277UA                |
| 23   | 2   | 3 $\times$ 1 $\times$ 0.7874 TH | W2 W7                                    | 3-PIN Terminal Strip  | Samtec            | TMMH-103-01-T-T         |
| 24   | 2   | 2 $\times$ 1 $\times$ 0.1 TH    | W3 W15                                   | Modified 0.025" Square Post Header  | Samtec            | MTSW-102-08-T-S-295     |
| 25   | 4   | 3 $\times$ 1 $\times$ 0.1 TH    | W1 W4 W5<br>W6                           | Modified 0.025" Square Post Header  | Samtec            | MTSW-103-08-T-S-295     |
| 26   | 9   | Not Installed                   | C8 C13 R18<br>R19 R20 R21<br>R22 R23 R24 | Do not install these components   | To Be Determined  | To Be Determine         |

### 3 EVM Operation

This section covers in detail the EVM operation to guide the user in evaluating the onboard DAC and how to interface the EVM to a specific host processor.

See the DAC8550 data sheet ([SLAS476](#)), DAC8551 data sheet ([SLAS429](#)), and DAC8552 data sheet ([SLAS430](#)) for information about the serial interface and other related topics.

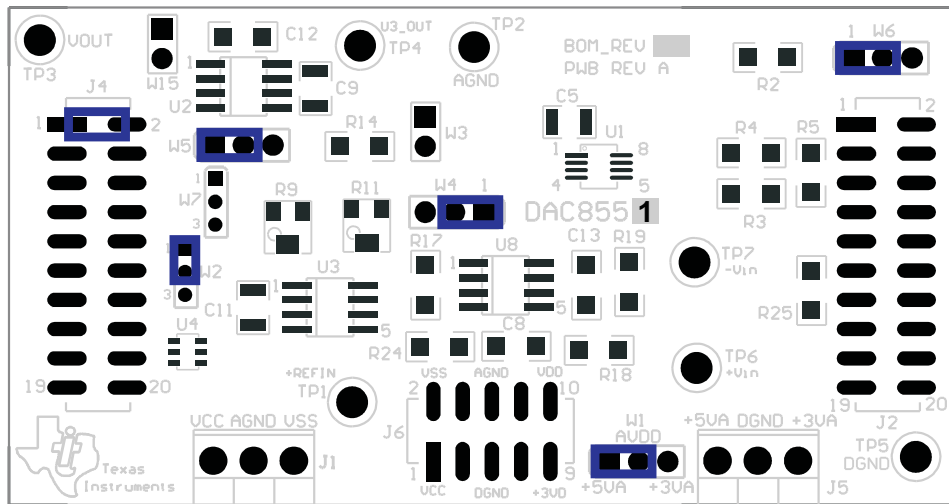
The EVM board is factory-tested and configured to operate in the unipolar output mode.

#### 3.1 Factory Default Setting

The EVM board is set to its default configuration from the factory as described on [Table 3](#) to operate in unipolar +5-V mode. [Figure 10](#) and [Figure 11](#) show the default jumper configuration as described in the table for the DAC8550/51 and DAC8552, respectively.

**Table 3. Factory Default Jumper Setting**

| Reference | Jumper Position | Function  |
|-----------|-----------------|---|
| W1        | 1-2             | Analog supply for the DAC8550/51/52 is +5 VA.   |
| W2        | 1-2             | DAC output A ( $V_{OUTA}$ ) is routed to J4-2.  |
| W3        | OPEN            | $V_{REFH}$ is not routed to the inverting input of the operational amplifier for voltage offset with gain of 2 output (for bipolar mode of operation).  |
| W4        | 1-2             | Onboard external buffered reference U3 is routed to $V_{REFH}$ .  |
| W5        | 1-2             | Negative supply rail of U2 operational amplifier is supplied with $V_{SS}$ .  |
| W6        | 1-2             | $\overline{CS}$ signal from J2 is used for frame synchronization, $\overline{SYNC}$ , signal.   |
| W7        | OPEN            | For DAC8550/51 EVM, the $V_{FB}$ is not routed out unless there is a need to minimize the output error. If using W7, remove R1 and short W7; then connect $V_{FB}$ and $V_{OUTA}$ as close as possible to the load. |
|           | 1-2             | For DAC8552 EVM, R1 is not installed and W7 is shorted so that $V_{OUTB}$ is routed to J4-10 header terminal.   |
|           | 2-3             | For DAC8552 EVM, R1 is not installed, and W7 is shorted so that $V_{OUTB}$ is routed to J4-14 header terminal.  |
| W15       | CLOSE           | Output operational amplifier, U2, is configured for a gain of 2.  |
| J4        | 2-1             | DAC output A ( $V_{OUTA}$ ) is connected to the non-inverting input of the output operational amplifier, U2.  |



**Figure 10. DAC8550/51 EVM Default Jumper Configuration**

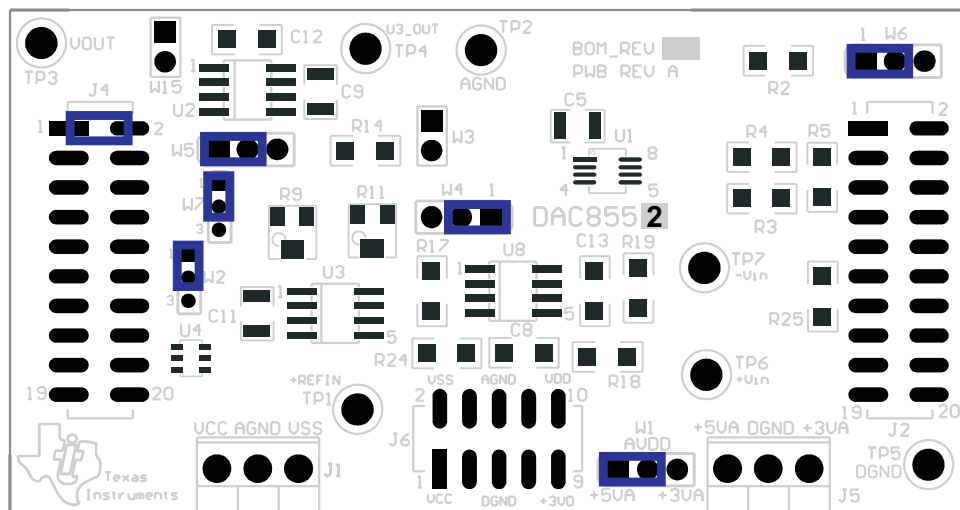


Figure 11. DAC8552 EVM Default Jumper Configuration

### 3.2 Host Processor Interface

The host processor basically drives the DAC; therefore, the proper operation of the DAC depends on the successful configuration between the host processor and the EVM board. Additionally, a properly written code is required to operate the DAC.

A custom cable can be made specific to the host interface platform. The EVM allows an interface to the host processor through the J2 header connector for the serial control signals and the serial data input. The output can be monitored through the J4 header connector.

An interface adapter board also is available for a specific TI DSP starter kit as well as an MSP430-based microprocessor as mentioned in Section 1. Using the TI Interface Board alleviates the task of building customized cables and allows easy configuration of a simple evaluation system.

The DAC8550/51/52 interfaces with any host processor capable of handling SPI™ protocols or the TI DSP. For more information regarding the DAC8550/51/52 data interface, see the data sheet.

### 3.3 EVM Stacking

The stacking of EVMs is possible if users need to evaluate two DAC8550/51/52 devices to yield a total of up to two-channel (for DAC8550/51) or four-channel (for DAC8552) outputs. A maximum of two EVMs are allowed because the output terminal, J4, dictates the number of DAC channels that can be connected without output bus contention. Table 4 shows how the DAC output channels are mapped into the output terminal, J4, with respect to the jumper position of W2 and W7.

Table 4. DAC Output Channel Mapping

| Reference | Jumper Position | Function  |
|-----------|-----------------|---|
| W2        | 1-2             | DAC output A ( $V_{OUTA}$ ) is routed to J4-2.  |
|           | 2-3             | DAC output A ( $V_{OUTA}$ ) is routed to J4-6.  |
| W7        | 1-2             | DAC output B ( $V_{OUTB}$ ) is routed to J4-10. |
|           | 2-3             | DAC output B ( $V_{OUTB}$ ) is routed to J4-14. |

In order to allow exclusive control of each EVM that is stacked together, each DAC8550/51/52 must have a separate  $\overline{SYNC}$  signal. This is accomplished in hardware by routing the  $\overline{SYNC}$  signal of the first EVM through  $\overline{CS}$  (P2/J2 pin 1) by shorting pins 1-2 of jumper W6. The second EVM should use the FSX signal (P2/J2 pin 7) to drive the  $\overline{SYNC}$  signal by shorting pins 2-3 of the jumper W6. The output can be mapped as described in Table 4 for each of the EVMs stacked.

### 3.4 The Output Operational Amplifier

The EVM includes an optional signal-conditioning circuit for the DAC output through an external operational amplifier, U2. Only one DAC output channel can be monitored at any given time for evaluation because the odd-numbered pins (J4-1 to J4-7) are tied together. The output operational amplifier is set to unity gain configuration by default but can be modified by simple jumper settings. Nevertheless, the raw output of the DAC can be probed through the specified pins of the J4 output terminal, which also provides mechanical stability when stacking or plugging into any interface board. In addition, it provides easy access for monitoring up to two (DAC8550/51) or four (DAC8552) DAC channels when stacking two EVMs together (see Section 3.3).

The following sections describe the different configurations of the output amplifier, U2.

#### 3.4.1 Unity Gain Output

The buffered output configuration can be used to prevent loading the DAC8550/51/52, although it may present some slight distortion because of the feedback resistor and capacitor. The user can tailor the feedback circuit to closely match the desired wave shape by simply desoldering R6 and C12 and replacing them with the desired values. It is also possible to simply eliminate R6 and C12 altogether and to solder a 0- $\Omega$  resistor in place of R6, if desired.

Table 5 shows the jumper setting for the unity gain configuration of the DAC external output buffer in unipolar or bipolar mode.

**Table 5. Unity Gain Output Jumper Settings**

| Reference | Jumper Position |         | Function  |
|-----------|-----------------|---------|---|
|           | Unipolar        | Bipolar |   |
| W3        | OPEN            | OPEN    | Disconnect $V_{REFH}$ from the inverting input of the operational amplifier.        |
| W5        | 2-3             | 1-2     | Supplies $V_{SS}$ to the negative rail of operational amplifier or ties it to AGND. |
| W15       | OPEN            | OPEN    | Disconnect negative input of the operational amplifier from the gain resistor, R12. |

#### 3.4.2 Output Gain of Two

Two types of configurations yield an output gain of 2, depending on the setup of the jumpers W3 and W15. These configurations allow the user to choose whether the DAC output has  $V_{REFH}$  as an offset or not.

Table 6 shows the proper jumper settings of the EVM for the 2 $\times$  gain output of the DAC.

**Table 6. Gain of Two Output Jumper Settings**

| Reference | Jumper Position |         | Function   |
|-----------|-----------------|---------|--|
|           | Unipolar        | Bipolar |  |
| W3        | Close           | Close   | Inverting input of the output operational amplifier, U2, is connected to $V_{REFH}$ for use as its offset voltage with a gain of 2. W15 jumper must be open. |
|           | Open            | Open    | $V_{REFH}$ is disconnected from the inverting input of the output operational amplifier, U2. W15 jumper must be closed.                                      |
| W5        | 2-3             | 1-2     | Supplies power, $V_{SS}$ , to the negative rail of operational amplifier, U2, for bipolar mode, or ties it to AGND for unipolar mode.                        |
| W15       | Close           | Close   | Configures operational amplifier, U2, for a gain of 2 output without a voltage offset. W3 jumper must be open.   |
|           | Open            | Open    | Inverting input of the operational amplifier, U2, is disconnected from the gain resistor, R12. W3 jumper must be closed.                                     |

### 3.4.3 Capacitive Load Drive

Another output configuration option is to drive a wide range of capacitive load requirements. However, all operational amplifiers under certain conditions may become unstable, depending on the operational amplifier configuration, gain, and load value. These are just a few of the factors that can affect operational amplifier stability performance and should be considered when implementing.

In unity gain, the OPA627 operational amplifier, U2, performs well with large capacitive loads. Increasing the gain enhances the amplifier's ability to drive even more capacitance, and adding a load resistor further improves the capacitive load drive capability.

Table 7 shows the jumper setting configuration for a capacitive load drive.

**Table 7. Capacitive Load Drive Output Jumper Settings**

| Reference | Jumper Position |         | Function  |
|-----------|-----------------|---------|---|
|           | Unipolar        | Bipolar |   |
| W3        | Open            | Open    | $V_{REFH}$ is disconnected from the inverting input of the output operational amplifier, U2.  |
| W5        | 2-3             | 1-2     | Supplies power, $V_{SS}$ , to the negative rail of operational amplifier, U2, for bipolar mode, or ties it to AGND for unipolar mode. |
| W15       | Open            | Open    | Capacitive load drive output of DAC is routed to pin 1 of W15 jumper and may be used as the output terminal.                          |

## 3.5 Optional Signal-Conditioning Operational Amplifier (U8B)

One part of the dual-package operational amplifier, OPA2227 (U8), is used for reference buffering (U8A) whereas the other is unused. This unused operational amplifier (U8B) is left for whatever operational amplifier circuit application the user desires to implement. The 1206 footprint for the resistors and capacitors surrounding the U8B operational amplifier are not populated and thus are available for easy configuration. Test points TP6 and TP7 are not installed either; so, the user has the option of how to connect the  $\pm$  input signals to this operational amplifier. No test point has been made available for the output due to space restriction, but a wire can simply be soldered to the output of the operational amplifier via the unused component pads that connect to it.

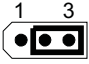
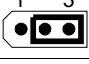
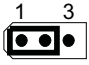
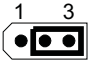


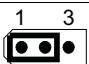
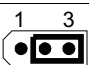
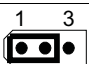
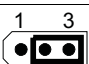
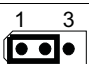
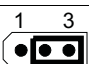
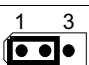

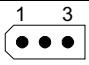
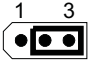


Once the operational amplifier circuit is realized, the configuration becomes easy by simply populating the corresponding components that match the circuit designed and leaving all other unused component footprints unpopulated.




### 3.6 Jumper Setting

Table 8 shows the function of each specific jumper setting of the EVM.

**Table 8. Jumper Setting Function**

| Reference | Jumper Setting  | Function   |
|-----------|---|--|
| W1        |    | +5-V analog supply is selected for $AV_{DD}$ .   |
|           |    | +3.3-V analog supply is selected for $AV_{DD}$ .   |
| W2        |    | Routes $V_{OUTA}$ to J4-2.   |
|           |    | Routes $V_{OUTA}$ to J4-6.   |
| W3        |    | Disconnects $V_{REFH}$ to the inverting input of the output operational amplifier, U2  |
|           |    | Connects $V_{REFH}$ to the inverting input of the output operational amplifier, U2   |
| W4        |    | Routes the adjustable, buffered, onboard +5-V reference to the $V_{REFH}$ input of the DAC8550/51/52.  |
|           |    | Routes the user-supplied reference from U4 (if installed), TP1 or J4-20 to the $V_{REFH}$ input of the DAC8550/51/52.  |
| W5        |    | Negative supply rail of the output operational amplifier, U2, is powered by $V_{SS}$ for bipolar operation.  |
|           |   | Negative supply rail of the output operational amplifier, U2, is tied to AGND for unipolar operation.  |
| W6        |  | $\overline{CS}$ signal from J2-1 is routed to drive the $\overline{SYNC}$ signal of the DAC8550/51/52.   |
|           |  | FSX signal from J2-7 is routed to drive the $\overline{SYNC}$ signal of the DAC8550/51/52.   |
| W7        |  | For DAC8550/51EVM, the $V_{FB}$ is routed out to minimize the output error. Remove R1 and short W7 as shown; then connect $V_{FB}$ and $V_{OUTA}$ as close as possible to the load. The $V_{FB}$ signal is then routed to J4-10. |
|           |  | For DAC8552EVM, R1 is not installed and W7 is shorted as shown so that $V_{OUTB}$ is routed to J4-10 header terminal.  |
|           |  | This is the default jumper position for DAC8550/51EVM when R1 is installed.  |
|           |  | For DAC8550/51EVM, the $V_{FB}$ is routed out to minimize the output error. Remove R1 and short W7 as shown; then connect $V_{FB}$ and $V_{OUTA}$ as close as possible to the load. The $V_{FB}$ signal is then routed to J4-14. |
| W15       |  | Disconnects the inverting input of the output operational amplifier, U2, from the gain resistor, R12.  |
|           |  | Connects the inverting input of the output operational amplifier, U2, to the gain resistor, R12, for gain of 2 configuration.  |

**Legend:**  Indicates the corresponding pins that are shorted or closed.

### **3.7 Related Texas Instruments Documentation**

To obtain a copy of any of the following TI documents, call the Texas Instruments Literature Response Center at (800) 477–8924 or the Product Information Center (PIC) at (972) 644–5580. When ordering, identify the manual by its title and literature number. Updated documents also can be obtained through the TI Web site at [www.ti.com](http://www.ti.com).

| <b>Data Sheets</b> | <b>Literature Number</b> |
|--------------------|--------------------------|
| DAC8550            | <a href="#">SLAS476</a>  |
| DAC8551            | <a href="#">SLAS429</a>  |
| DAC8552            | <a href="#">SLAS430</a>  |
| DAC8531            | <a href="#">SBAS192</a>  |
| DAC8532            | <a href="#">SBAS246</a>  |
| DAC8501            | <a href="#">SBAS212</a>  |
| DAC7512            | <a href="#">SBAS156</a>  |
| DAC7513            | <a href="#">SBAS157</a>  |
| REF02              | <a href="#">SBVS003</a>  |
| REF3240            | <a href="#">SBVS058</a>  |
| OPA627             | <a href="#">SBOS165</a>  |
| OPA2227            | <a href="#">SBOS110</a>  |

### **3.8 Questions About This or Other Data Converter EVMs?**

If you have questions about this or other Texas Instruments Data Converter evaluation modules, send an e-mail to the Data Converter Application Team at [dataconvapps@list.ti.com](mailto:dataconvapps@list.ti.com). Include in the subject heading the product with which you have questions or concerns.

### **3.9 Schematic**

The schematic appears on the following page.



| Revision History |            |          |
|------------------|------------|----------|
| REV              | ECN Number | Approved |
|                  |            |          |
|                  |            |          |
|                  |            |          |

DUT can accommodate the following devices:  
 1) DAC8552 (MSOP-8 and SON-8)  
 2) DAC8551 (MSOP-8 and SON-8)  
 3) DAC8550 (MSOP-8 and SON-8)  
 4) DAC8532 (MSOP-8)  
 5) DAC8531 (MSOP-8)  
 6) DAC8501 (MSOP-8)  
 7) DAC7513 (MSOP-8)  
 8) DAC7512 (MSOP-8)  
 See User's Guide for more information.

U4 is OPTIONAL - Do not populate U4, C2, and R15

EDGE Numbers:  
 DAC8550EVM BOM = 6483265  
 DAC8551EVM BOM = 6475348  
 DAC8552EVM BOM = 6475349  
 DAC8551-2EVM PWB = 6475350  
 DAC8551-2EVM DDB = 6475351 (BLOCK)  
 DAC8551-2EVM PCA = 6475352  
 DAC8550EVM KIT = 6430334 (BLOCK)  
 DAC8551EVM KIT = 6475353 (BLOCK)  
 DAC8552EVM KIT = 6475354 (BLOCK)

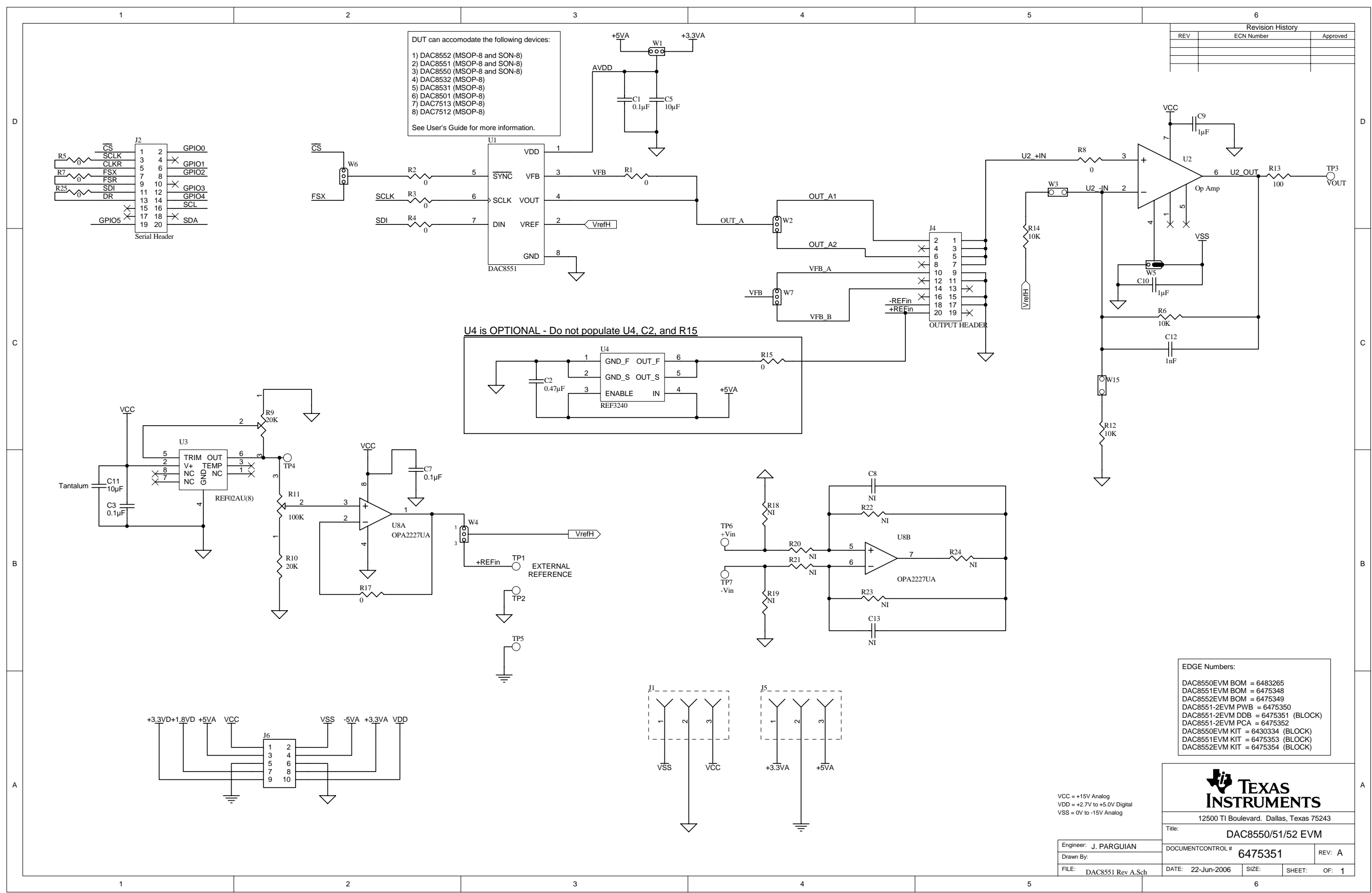


12500 TI Boulevard, Dallas, Texas 75243

Title: DAC8550/51/52 EVM

VCC = +15V Analog  
 VDD = +2.7V to +5.0V Digital  
 VSS = 0V to -15V Analog

|                         |                            |                    |
|-------------------------|----------------------------|--------------------|
| Engineer: J. PARGUIAN   | DOCUMENT CONTROL # 6475351 | REV: A             |
| Drawn By:               | DATE: 22-Jun-2006          | SIZE: SHEET: OF: 1 |
| FILE: DAC8551 Rev A.Sch |                            |                    |



## EVALUATION BOARD/KIT IMPORTANT NOTICE

Texas Instruments (TI) provides the enclosed product(s) under the following conditions:

This evaluation board/kit is intended for use for **ENGINEERING DEVELOPMENT, DEMONSTRATION, OR EVALUATION PURPOSES ONLY** and is not considered by TI to be a finished end-product fit for general consumer use. Persons handling the product(s) must have electronics training and observe good engineering practice standards. As such, the goods being provided are not intended to be complete in terms of required design-, marketing-, and/or manufacturing-related protective considerations, including product safety and environmental measures typically found in end products that incorporate such semiconductor components or circuit boards. This evaluation board/kit does not fall within the scope of the European Union directives regarding electromagnetic compatibility, restricted substances (RoHS), recycling (WEEE), FCC, CE or UL, and therefore may not meet the technical requirements of these directives or other related directives.

Should this evaluation board/kit not meet the specifications indicated in the User's Guide, the board/kit may be returned within 30 days from the date of delivery for a full refund. **THE FOREGOING WARRANTY IS THE EXCLUSIVE WARRANTY MADE BY SELLER TO BUYER AND IS IN LIEU OF ALL OTHER WARRANTIES, EXPRESSED, IMPLIED, OR STATUTORY, INCLUDING ANY WARRANTY OF MERCHANTABILITY OR FITNESS FOR ANY PARTICULAR PURPOSE.**

The user assumes all responsibility and liability for proper and safe handling of the goods. Further, the user indemnifies TI from all claims arising from the handling or use of the goods. Due to the open construction of the product, it is the user's responsibility to take any and all appropriate precautions with regard to electrostatic discharge.

**EXCEPT TO THE EXTENT OF THE INDEMNITY SET FORTH ABOVE, NEITHER PARTY SHALL BE LIABLE TO THE OTHER FOR ANY INDIRECT, SPECIAL, INCIDENTAL, OR CONSEQUENTIAL DAMAGES.**

TI currently deals with a variety of customers for products, and therefore our arrangement with the user **is not exclusive**.

TI assumes **no liability for applications assistance, customer product design, software performance, or infringement of patents or services described herein.**

Please read the User's Guide and, specifically, the Warnings and Restrictions notice in the User's Guide prior to handling the product. This notice contains important safety information about temperatures and voltages. For additional information on TI's environmental and/or safety programs, please contact the TI application engineer or visit [www.ti.com/esh](http://www.ti.com/esh).

No license is granted under any patent right or other intellectual property right of TI covering or relating to any machine, process, or combination in which such TI products or services might be or are used.

### FCC Warning

This evaluation board/kit is intended for use for **ENGINEERING DEVELOPMENT, DEMONSTRATION, OR EVALUATION PURPOSES ONLY** and is not considered by TI to be a finished end-product fit for general consumer use. It generates, uses, and can radiate radio frequency energy and has not been tested for compliance with the limits of computing devices pursuant to part 15 of FCC rules, which are designed to provide reasonable protection against radio frequency interference. Operation of this equipment in other environments may cause interference with radio communications, in which case the user at his own expense will be required to take whatever measures may be required to correct this interference.

### EVM WARNINGS AND RESTRICTIONS

It is important to operate this EVM within the input voltage range of +2.7 V to +5 V and the output voltage range of -5 V to +5 V.

Exceeding the specified input range may cause unexpected operation and/or irreversible damage to the EVM. If there are questions concerning the input range, please contact a TI field representative prior to connecting the input power.

Applying loads outside of the specified output range may result in unintended operation and/or possible permanent damage to the EVM. Please consult the EVM User's Guide prior to connecting any load to the EVM output. If there is uncertainty as to the load specification, please contact a TI field representative.

During normal operation, some circuit components may have case temperatures greater than 30°C. The EVM is designed to operate properly with certain components above 85°C as long as the input and output ranges are maintained. These components include but are not limited to linear regulators, switching transistors, pass transistors, and current sense resistors. These types of devices can be identified using the EVM schematic located in the EVM User's Guide. When placing measurement probes near these devices during operation, please be aware that these devices may be very warm to the touch.

Mailing Address: Texas Instruments, Post Office Box 655303, Dallas, Texas 75265  
Copyright © 2006, Texas Instruments Incorporated

## IMPORTANT NOTICE

Texas Instruments Incorporated and its subsidiaries (TI) reserve the right to make corrections, modifications, enhancements, improvements, and other changes to its products and services at any time and to discontinue any product or service without notice. Customers should obtain the latest relevant information before placing orders and should verify that such information is current and complete. All products are sold subject to TI's terms and conditions of sale supplied at the time of order acknowledgment.

TI warrants performance of its hardware products to the specifications applicable at the time of sale in accordance with TI's standard warranty. Testing and other quality control techniques are used to the extent TI deems necessary to support this warranty. Except where mandated by government requirements, testing of all parameters of each product is not necessarily performed.

TI assumes no liability for applications assistance or customer product design. Customers are responsible for their products and applications using TI components. To minimize the risks associated with customer products and applications, customers should provide adequate design and operating safeguards.

TI does not warrant or represent that any license, either express or implied, is granted under any TI patent right, copyright, mask work right, or other TI intellectual property right relating to any combination, machine, or process in which TI products or services are used. Information published by TI regarding third-party products or services does not constitute a license from TI to use such products or services or a warranty or endorsement thereof. Use of such information may require a license from a third party under the patents or other intellectual property of the third party, or a license from TI under the patents or other intellectual property of TI.

Reproduction of information in TI data books or data sheets is permissible only if reproduction is without alteration and is accompanied by all associated warranties, conditions, limitations, and notices. Reproduction of this information with alteration is an unfair and deceptive business practice. TI is not responsible or liable for such altered documentation.

Resale of TI products or services with statements different from or beyond the parameters stated by TI for that product or service voids all express and any implied warranties for the associated TI product or service and is an unfair and deceptive business practice. TI is not responsible or liable for any such statements.

TI products are not authorized for use in safety-critical applications (such as life support) where a failure of the TI product would reasonably be expected to cause severe personal injury or death, unless officers of the parties have executed an agreement specifically governing such use. Buyers represent that they have all necessary expertise in the safety and regulatory ramifications of their applications, and acknowledge and agree that they are solely responsible for all legal, regulatory and safety-related requirements concerning their products and any use of TI products in such safety-critical applications, notwithstanding any applications-related information or support that may be provided by TI. Further, Buyers must fully indemnify TI and its representatives against any damages arising out of the use of TI products in such safety-critical applications.

TI products are neither designed nor intended for use in military/aerospace applications or environments unless the TI products are specifically designated by TI as military-grade or "enhanced plastic." Only products designated by TI as military-grade meet military specifications. Buyers acknowledge and agree that any such use of TI products which TI has not designated as military-grade is solely at the Buyer's risk, and that they are solely responsible for compliance with all legal and regulatory requirements in connection with such use.

TI products are neither designed nor intended for use in automotive applications or environments unless the specific TI products are designated by TI as compliant with ISO/TS 16949 requirements. Buyers acknowledge and agree that, if they use any non-designated products in automotive applications, TI will not be responsible for any failure to meet such requirements.

Following are URLs where you can obtain information on other Texas Instruments products and application solutions:

| <b>Products</b>       |  | <b>Applications</b> |  |
|-----------------------|--|---------------------|--|
| Amplifiers            | <a href="http://amplifier.ti.com">amplifier.ti.com</a>             | Audio               | <a href="http://www.ti.com/audio">www.ti.com/audio</a>                   |
| Data Converters       | <a href="http://dataconverter.ti.com">dataconverter.ti.com</a>     | Automotive          | <a href="http://www.ti.com/automotive">www.ti.com/automotive</a>         |
| DSP                   | <a href="http://dsp.ti.com">dsp.ti.com</a>                         | Broadband           | <a href="http://www.ti.com/broadband">www.ti.com/broadband</a>           |
| Interface             | <a href="http://interface.ti.com">interface.ti.com</a>             | Digital Control     | <a href="http://www.ti.com/digitalcontrol">www.ti.com/digitalcontrol</a> |
| Logic                 | <a href="http://logic.ti.com">logic.ti.com</a>                     | Military            | <a href="http://www.ti.com/military">www.ti.com/military</a>             |
| Power Mgmt            | <a href="http://power.ti.com">power.ti.com</a>                     | Optical Networking  | <a href="http://www.ti.com/opticalnetwork">www.ti.com/opticalnetwork</a> |
| Microcontrollers      | <a href="http://microcontroller.ti.com">microcontroller.ti.com</a> | Security            | <a href="http://www.ti.com/security">www.ti.com/security</a>             |
| RFID                  | <a href="http://www.ti-rfid.com">www.ti-rfid.com</a>               | Telephony           | <a href="http://www.ti.com/telephony">www.ti.com/telephony</a>           |
| Low Power<br>Wireless | <a href="http://www.ti.com/lpw">www.ti.com/lpw</a>                 | Video & Imaging     | <a href="http://www.ti.com/video">www.ti.com/video</a>                   |
|                       |  | Wireless            | <a href="http://www.ti.com/wireless">www.ti.com/wireless</a>             |

Mailing Address: Texas Instruments, Post Office Box 655303, Dallas, Texas 75265  
Copyright © 2007, Texas Instruments Incorporated